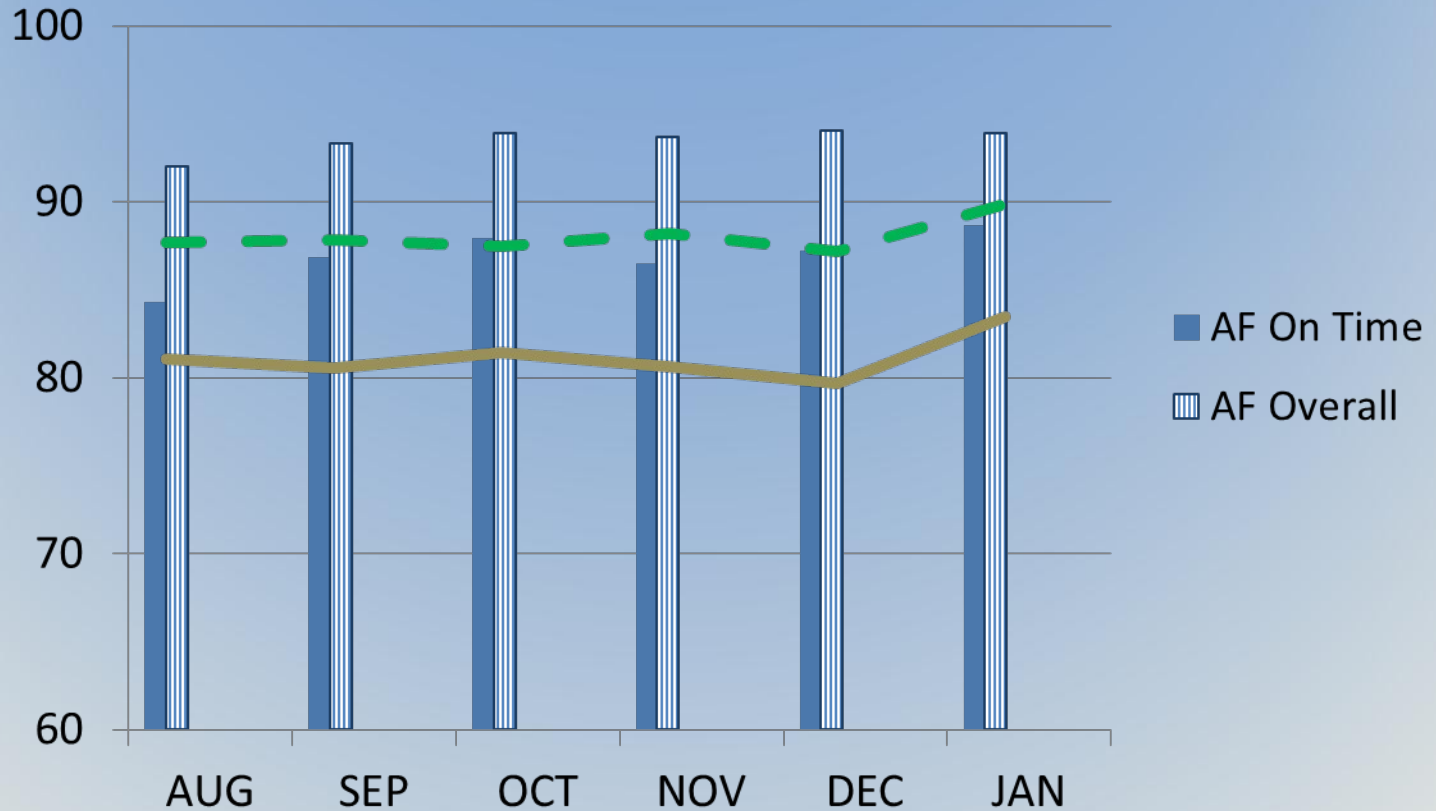


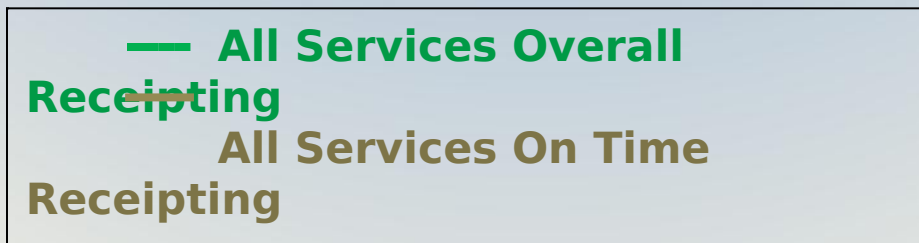
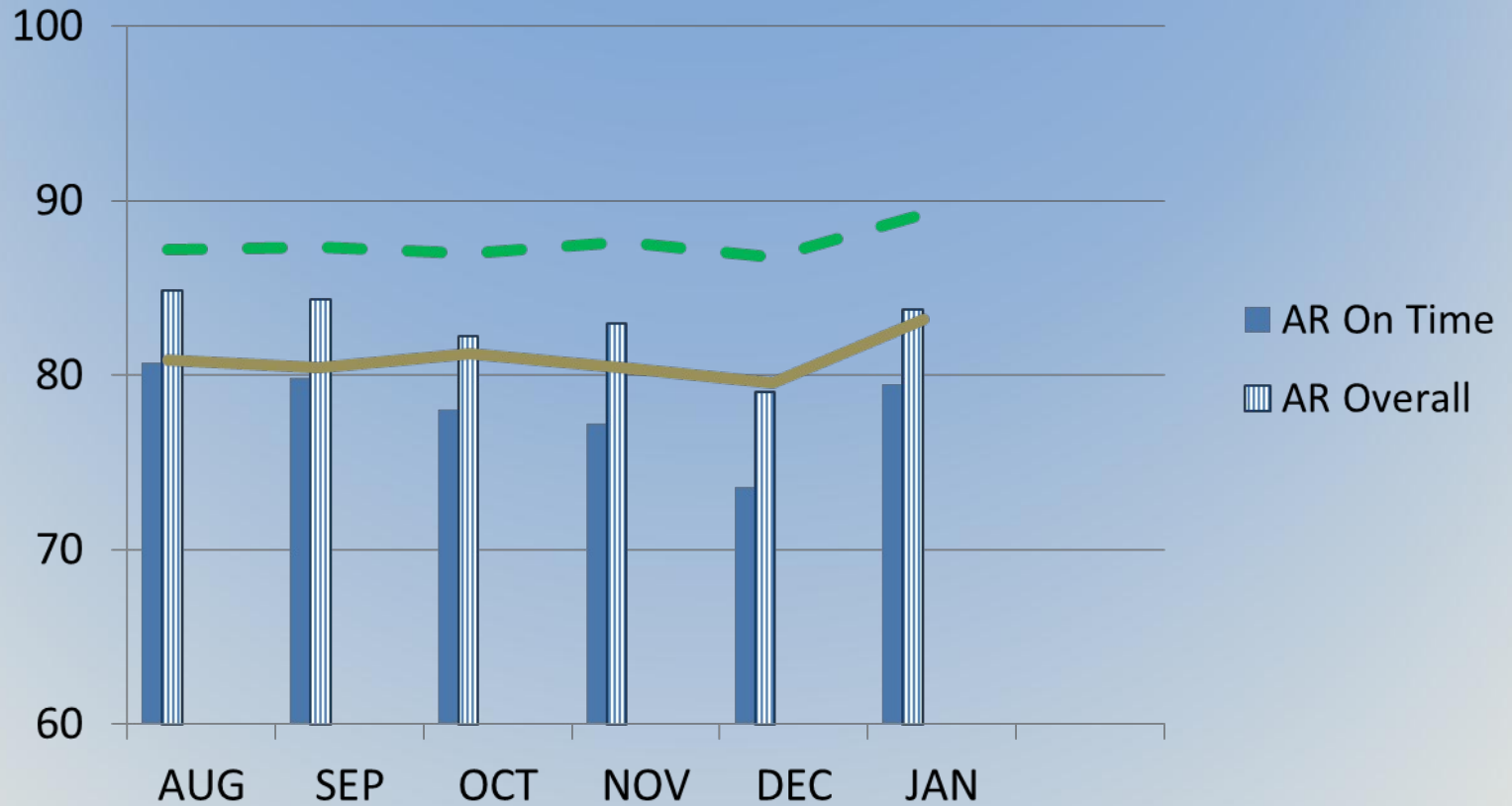
Auto Receipting

Air Force Receipting August 2011 through January 2012

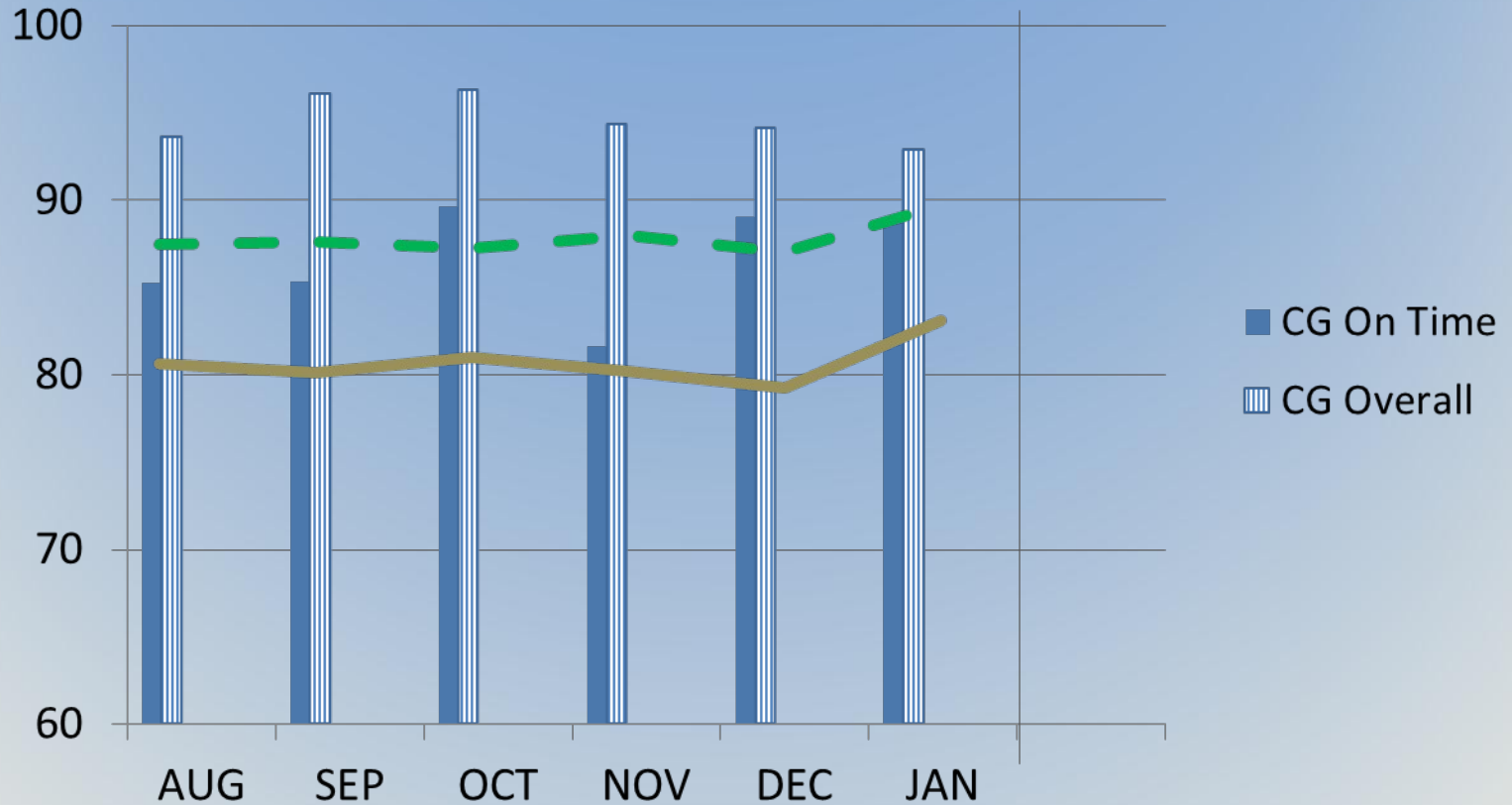


— All Services Overall Receipting
— All Services On Time Receipting

Army Receipting August 2011 through January 2012

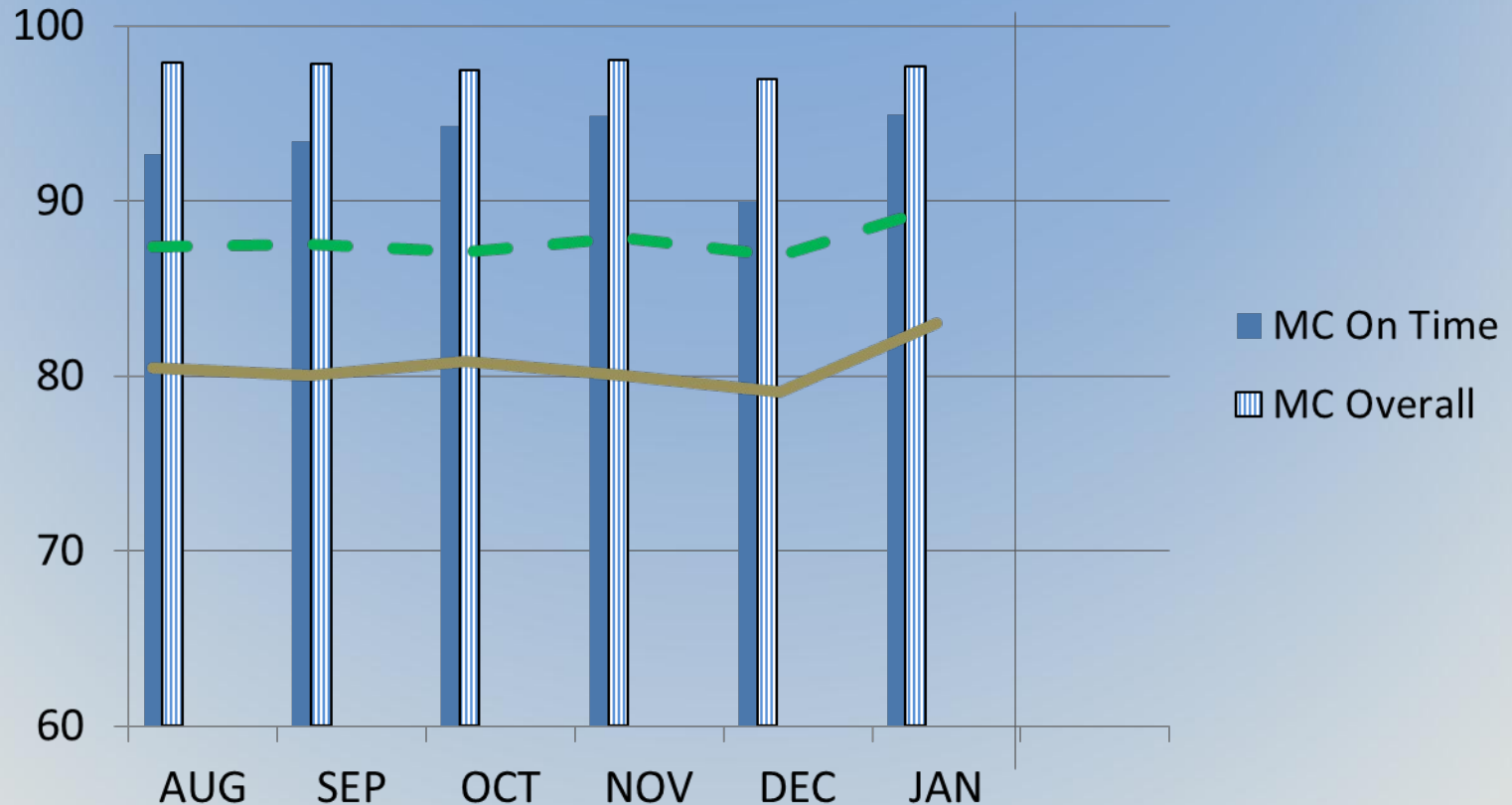


Coast Guard Receipting August 2011 through January 2012



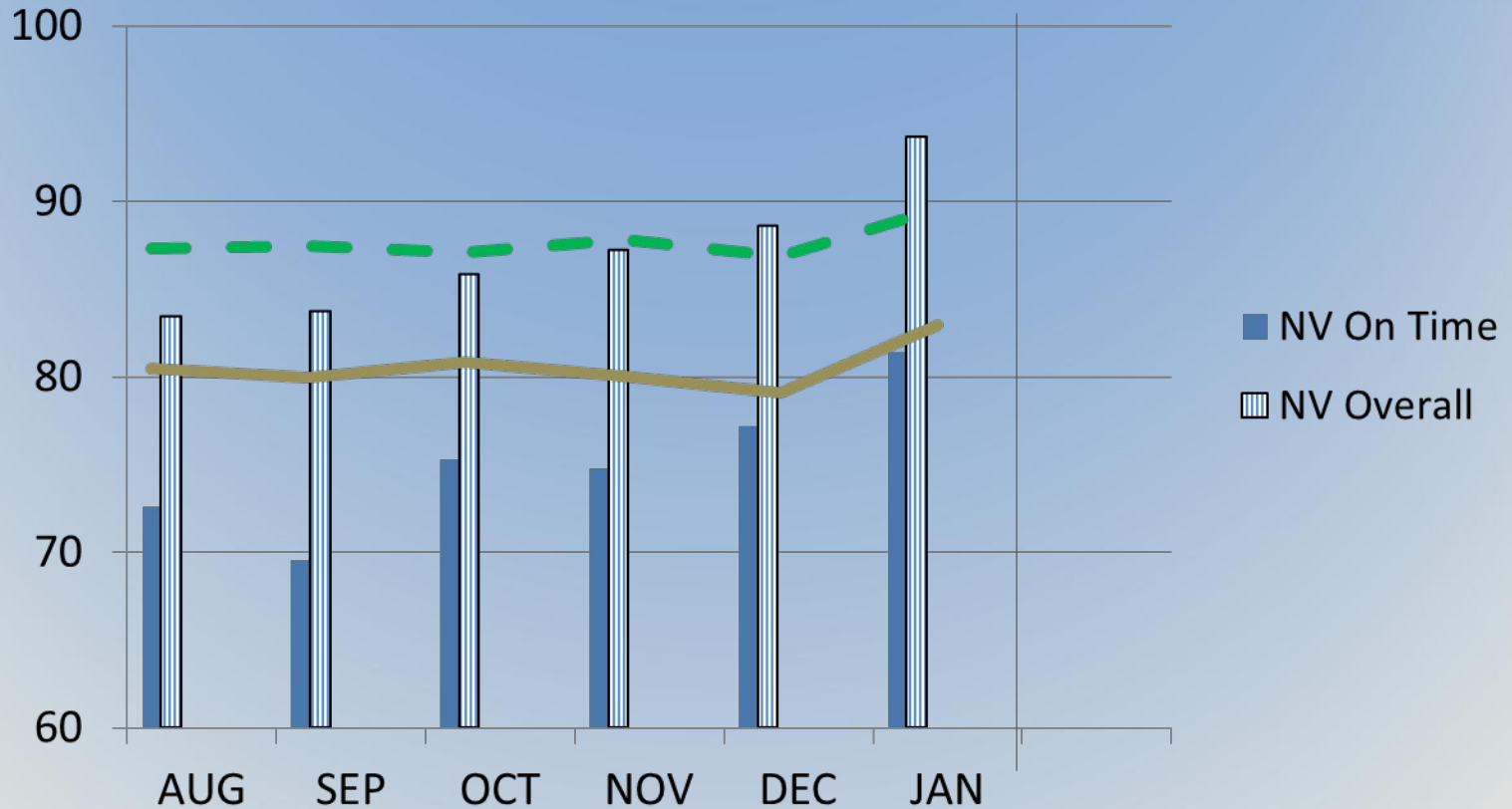
— All Services Overall Receipting
— All Services On Time Receipting

Marine Corp Receipting August 2011 through January 2012



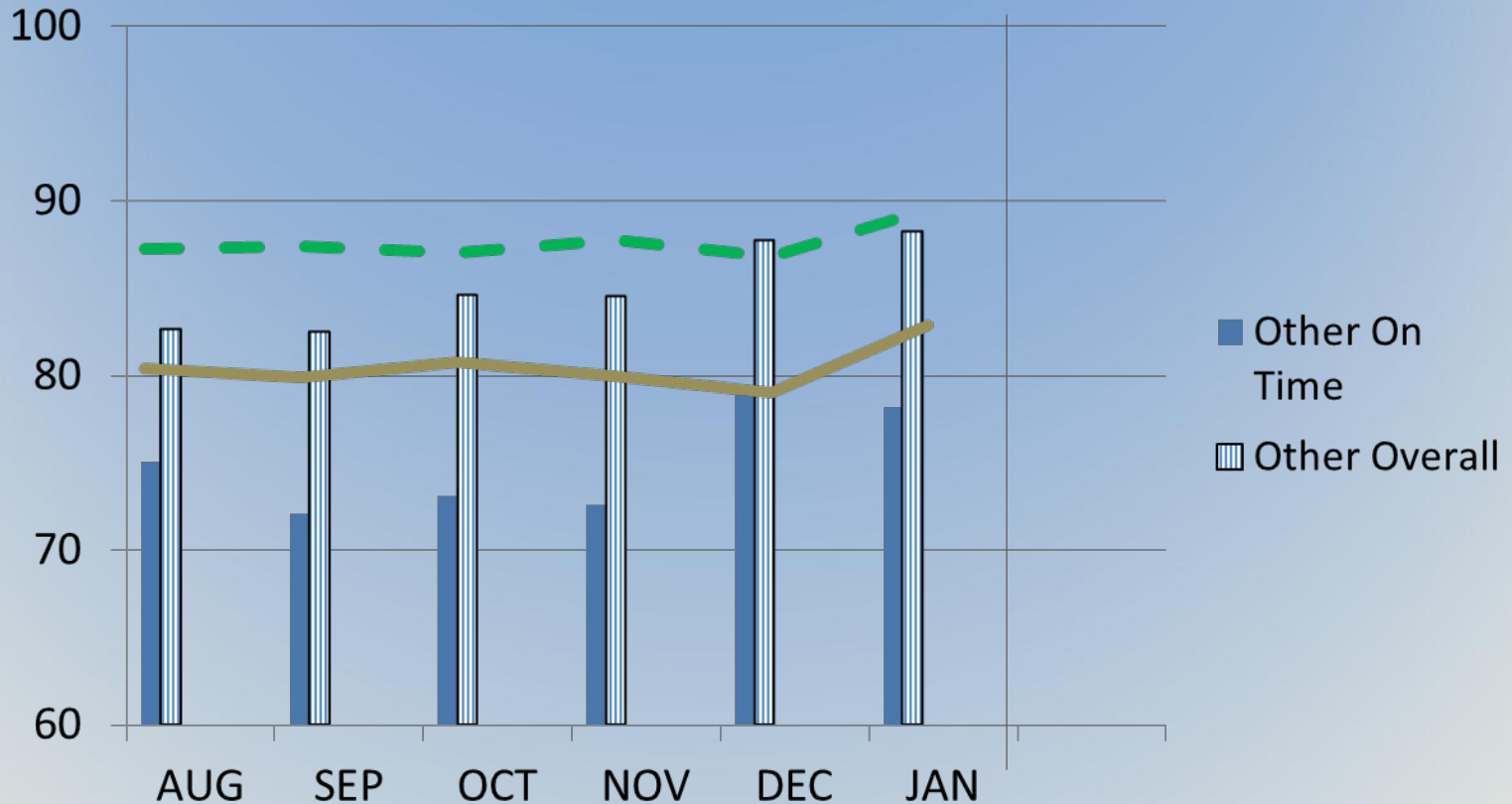
— All Services Overall Receipting
— All Services On Time Receipting

Navy Receipting August 2011 through January 2012



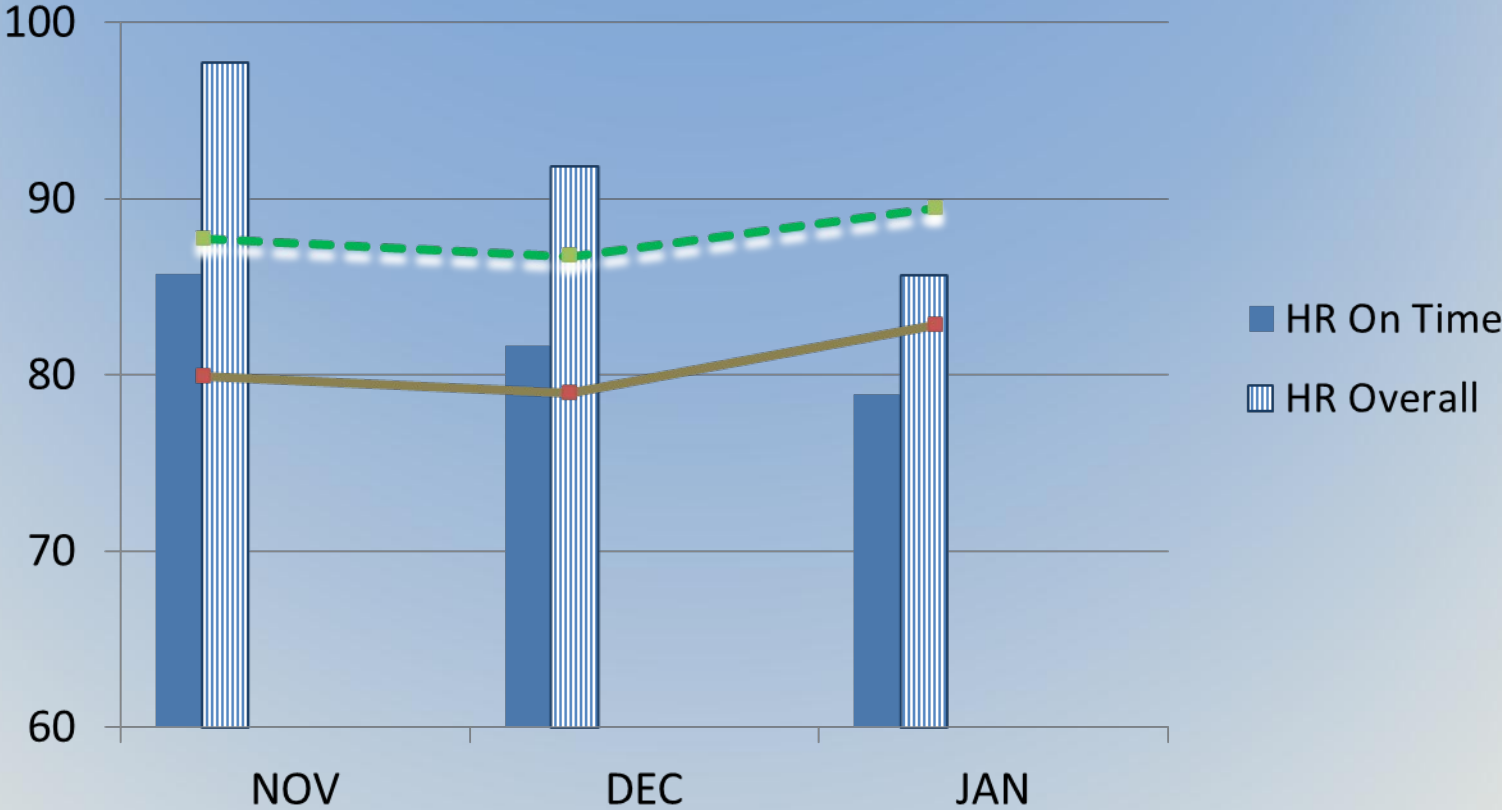
— All Services Overall Receipting
— All Services On Time Receipting

'Other' Receipting August 2011 through January 2012



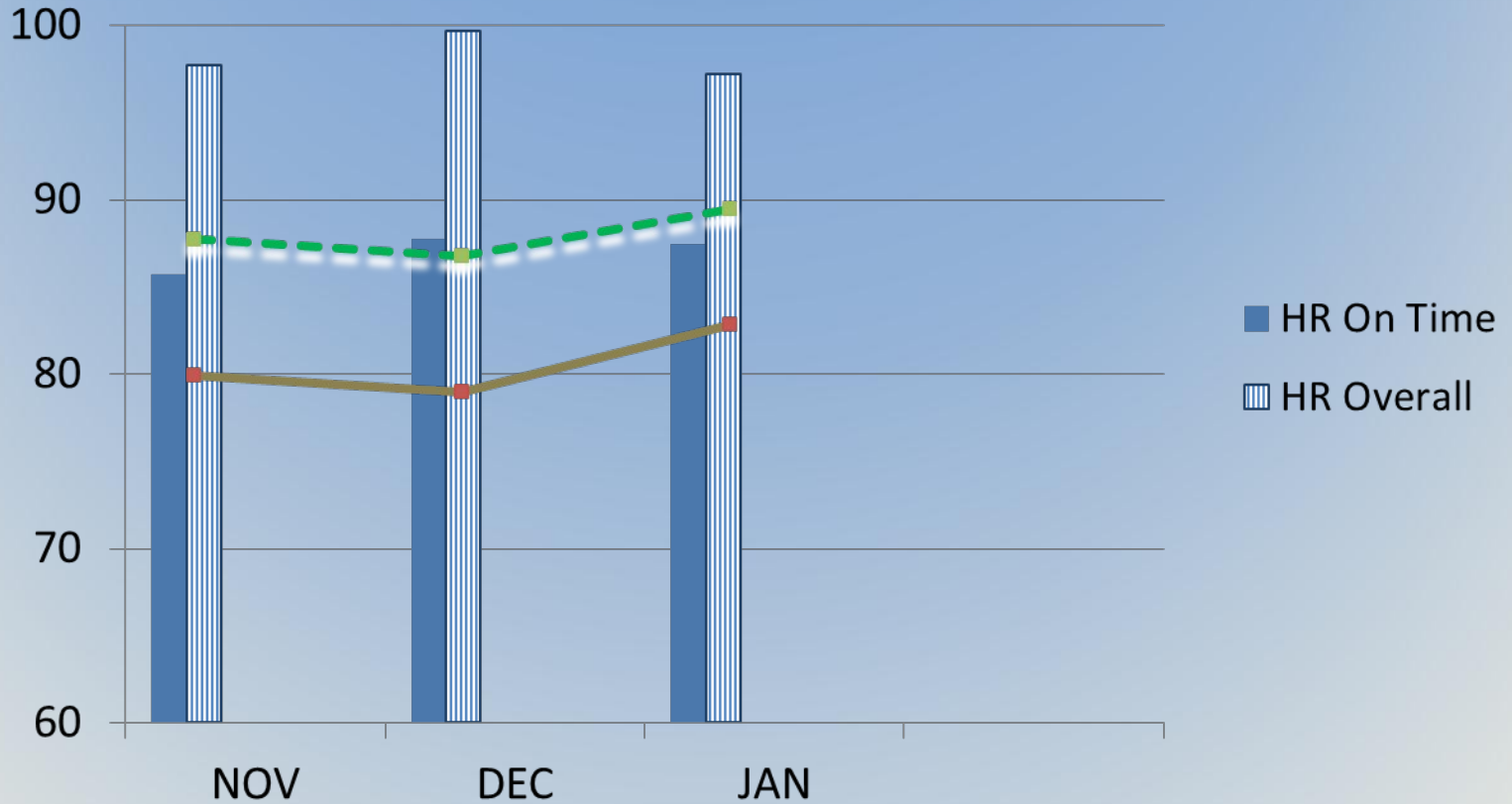
— **All Services Overall Receipting**
— **All Services On Time Receipting**

Hampton Rhodes Receipting November 2011 through January 2012



— All Services Overall Receipting
— All Services On Time Receipting

Hampton Rhodes Receipting November 2011 through January 2012



**— All Services Overall
Receipting**
**— All Services On Time
Receipting**

Hampton Rhodes Test

- Original test Nov 1 2011 – 1 Feb 2012
- Troop Support emphasis does not improve rates
- Next steps
 - Headquarter emphasis
 - Rollout extension
 - Order denial?

Order held in STORES if order not receipted within 5 days of RDD

The screenshot shows the STORES web application interface. At the top left is the STORES logo with a shopping cart icon. The top navigation bar is red and contains the text: "Ordering Point: FT9002 Philadelphia Date/Time: 2/16/2012 4:18:13 PM". To the right of this bar is a white box with the text "UNCLASSIFIED SENSITIVE". Below the navigation bar are links for "MAIN MENU", "HELP", "DLA HOME", and "LOGOFF". The main heading is "Pending Orders" with the subtext "Created by Jeffrey Nienstedt". A button labeled "Show All Orders" is centered below the heading. A table of pending orders is displayed with the following columns: "Created By", "Vendor", "Total Value", "Number Of Lines", "ShipTo DoDAAC", "RDD", and "Status". The table contains three rows of data. The first row has a status of "Hold", the second "Approved", and the third "Approved". Below the table is a note: "NOTE: If you make any changes, please click on Save before you continue." and buttons for "Save", "Reset", and "Send Orders". A link for "View Transaction Log" is at the bottom.

	Created By	Vendor	Total Value	Number Of Lines	ShipTo DoDAAC	RDD	Status
DETAILS	Jeffrey Nienstedt	SYSCO CENTRAL ALABAMA	\$1,680.94	4	FT9002	2/18/2012	Hold
DETAILS	Jeffrey Nienstedt	SYSCO CENTRAL ALABAMA	\$637.50	1	FT6423	2/18/2012	Approved
DETAILS	Jeffrey Nienstedt	DAIRY FRESH OF ALABAMA	\$31.40	1	FT6423	2/18/2012	Approved

Order put on hold and cannot be sent until order over 5 days past the RDD is receipted.

Hold is based on receipting for individual ship-to

Note: Drop-down will not contain "Approved" until order is receipted